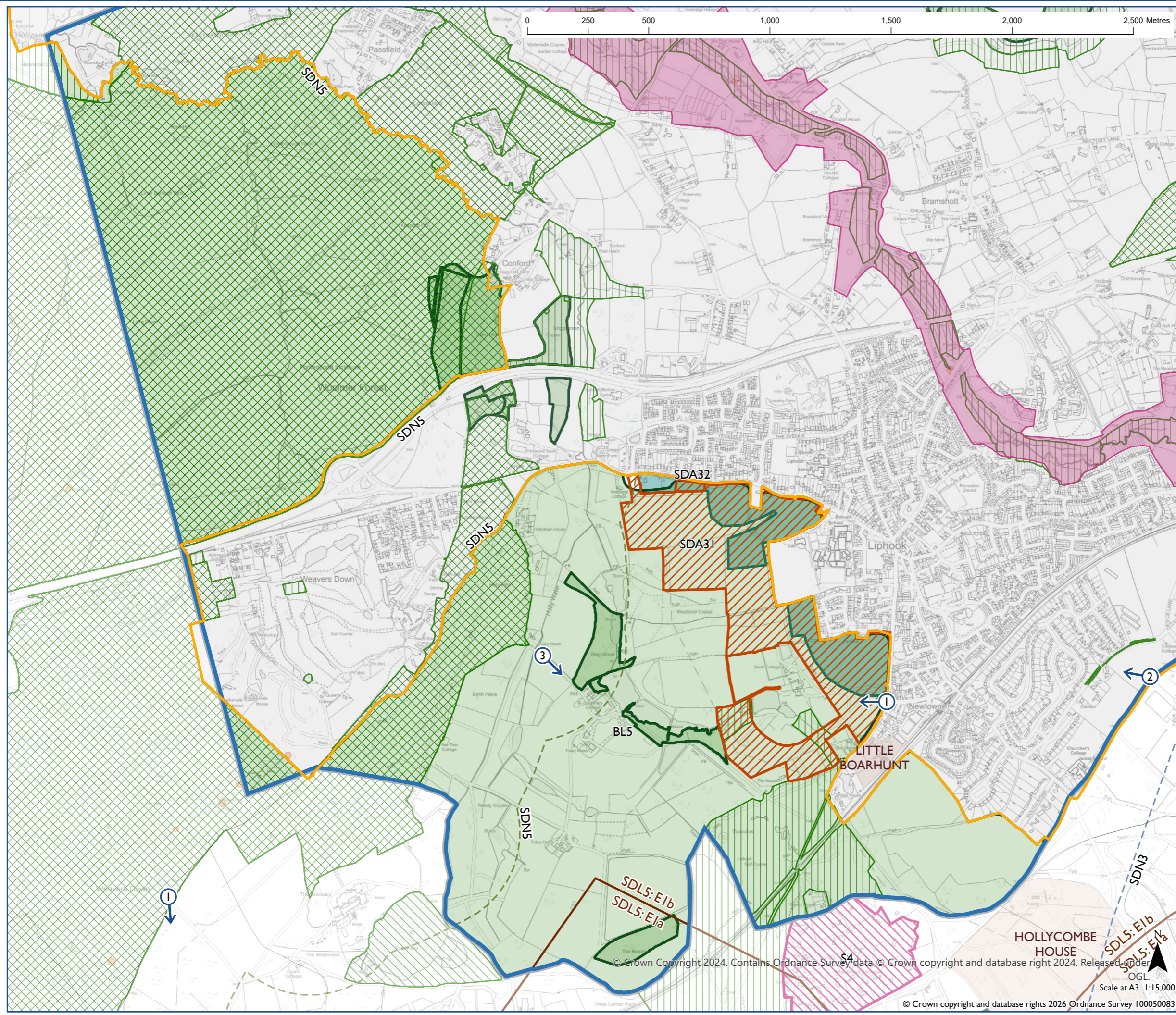


Proposed Submission South Downs
Local Plan - Policies Map Inset:
Bramshott and Liphook

Including Bramshott and Liphook NDP Made
12 December 2024



- NDP Designated Boundary (where shown)
- Settlement Boundary SDC2
- Residential or Residential with other uses Allocation SDA1-80
- HRA Area SDN3 (this area is within)
- HRA Area SDN5 (this area is within)
- Dark Night Sky Zone SDL5 (this area is within)
- NDP Significant Local View - BL8
- NDP Biodiversity Opportunity Area - BL5
- International Nature Conservation Designation SDNI (where present)
- National Nature Conservation Designation SDNI (where present)
- Local Nature Conservation Designation SDNI (where present)
- Irreplaceable Habitats SDN1
- Conservation Area SDL8
- Scheduled Monument SDL6
- Registered Park and Garden SDL6
- SDNPA Boundary

Map Notes:
NDP allocations to the south of Bramshott and Liphook have been determined by the Milland NDP and Rogate and Rake NDP.