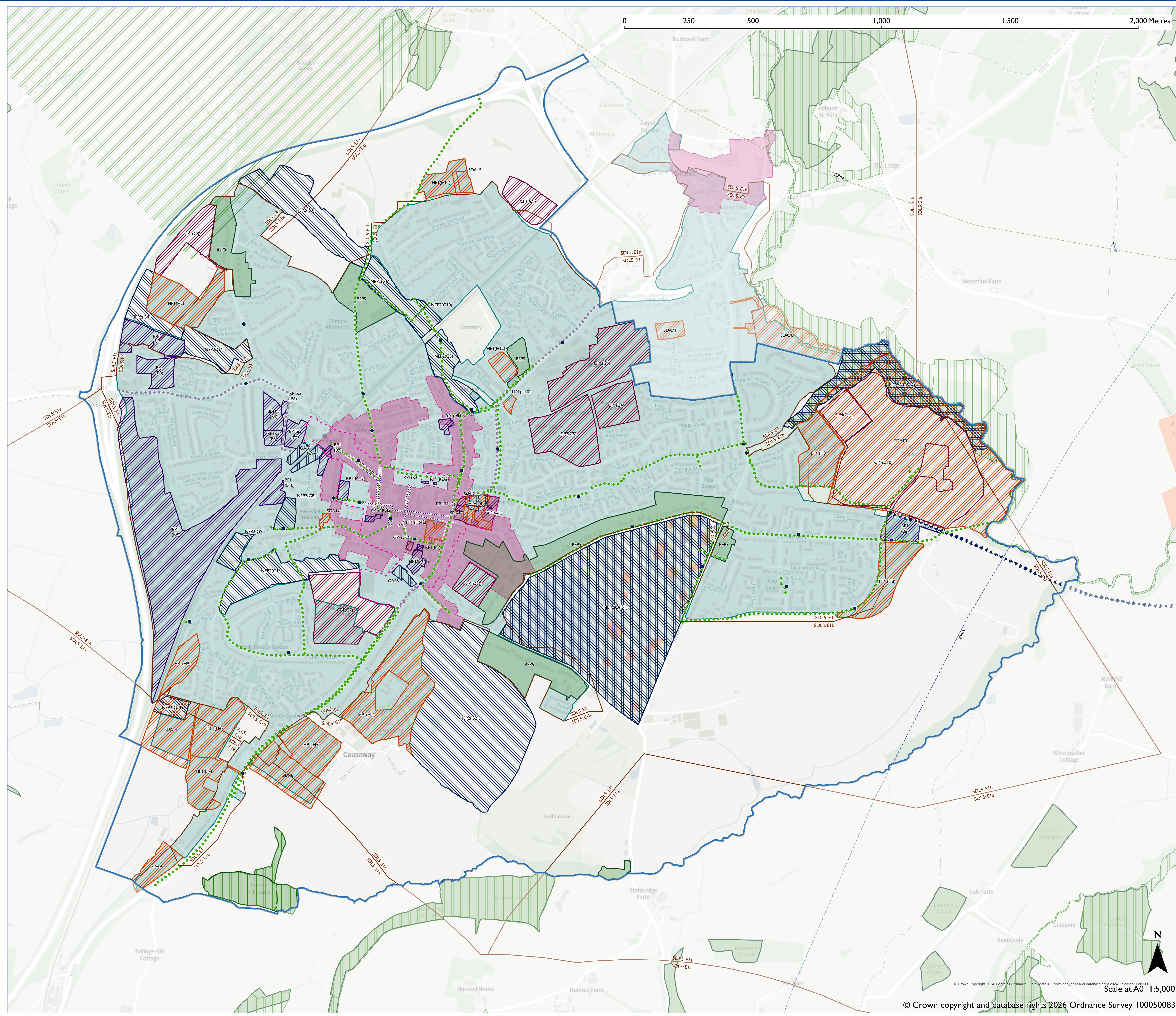


Proposed Submission South Downs Local Plan - Policies
Map Inset:
Petersfield

Including Petersfield NDP Made 21 January 2016



- ▬ NDP Designated Boundary (where shown)
- ▬ Settlement Boundary SDC2
- ▨ Residential or Residential with other uses Allocation SDA1-80
- ▨ Town or Village Centre SDE4/SDE5
- ⋯ Primary Shopping Frontage SDE5
- ⋯ Secondary Shopping Frontage SDE5
- ⋯ Safeguarded Former Railway Line SDT2
- ▭ HRA Area SDN3 (this area is within)
- ▭ HRA Area SDN5 (this area is within)
- ▭ Dark Night Sky Zone SDL5 (this area is within)
- NDP (Aspirational) New Cycle Route Point - GAP2
- NDP (Aspirational) Identified Traffic Hotspot - GAP2 & 3
- NDP (Aspirational) Car Park Route - GAP7
- NDP (Aspirational) New Cycle Route - GAP2 & 3
- ⋯ NDP Retail Frontage (Primary) - RP2
- ⋯ NDP Retail Frontage (Secondary) - RP2
- ▨ NDP Town Centre - RPI
- ▨ NDP Housing - HPI
- ▨ NDP Business Area - BP1, BP1&5
- ▨ NDP Community Facility - CP1, CP2, CP4
- ▨ NDP Local Green Space - NEP2
- ▨ NDP Natural Environment Policy 3 - NEP3
- ▨ NDP Natural Environment Policy 3 - NEP4
- ▨ NDP Local Wildlife Site - WSI2
- ▨ NDP Town Centre Opportunity - RPI, HPI
- ▨ NDP Car Park - GAP5, GAP6
- ▨ NDP Area of Special Character - BEP5
- ▨ International Nature Conservation Designation SDN1 (where present)
- ▨ National Nature Conservation Designation SDN1 (where present)
- ▨ Local Nature Conservation Designation SDN1 (where present)
- ▨ Irreplaceable Habitats SDN1
- ▨ Conservation Area SDL8
- ▨ Scheduled Monument SDL6

Map Notes:
NDP allocations and designations to the north east of Petersfield Neighbourhood Area have been determined by the SDLP. See Sheet inset map.