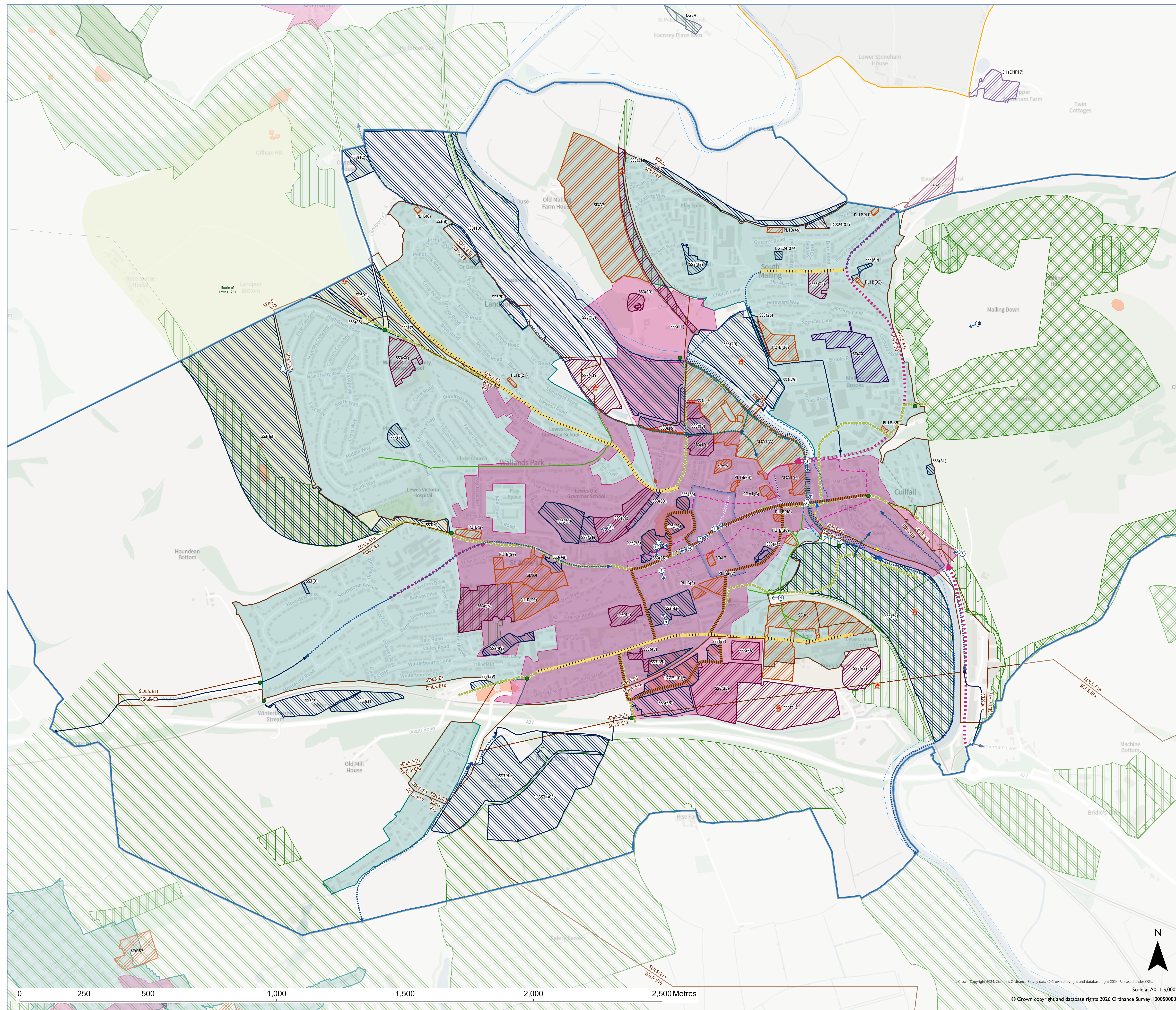


Proposed Submission South Downs Local Plan - Policies
Map Inset:
Lewes

Including Lewes NDP Made 11 April 2019



- NDP Designated Boundary (where shown)
- Settlement Boundary SDC2
- Employment Allocation SDA3
- Residential or Residential with other uses Allocation SDA1-80
- Local Green Space SDG4
- Primary Shopping Frontage SDES
- Secondary Shopping Frontage SDES
- Town or Village Centre SDE4/SDE5
- Dark Night Sky Zone SDL5 (this area is within)
- NDP View - HC3(a)
- NDP Bonfire
- NDP Countryside Gateway - SS1,SS2
- NDP Animated river Corridor - SS1 & 2
- NDP Arrival Street - SS1 & 2
- NDP Existing Cycle Network - SS1 & 2
- NDP Green Link - SS1 & 2
- NDP Pedestrian Link - SS1 & 2
- NDP Proposed Heritage Trail - SS1 & 2
- NDP River Corridor Strategy: Existing Path or Access - SS4
- NDP River Corridor Strategy: Poor or No Access Where Links are Needed - SS4
- NDP Strengthen Cycle Network - SS1 & 2
- NDP Traffic Calmed Street - SS1 & 2
- NDP Housing - PL1B
- NDP Local Community Space - SS3
- NDP Local Green Space - SS3
- NDP Character and Design - S4 and S5
- International Nature Conservation Designation SDNI (where present)
- National Nature Conservation Designation SDNI (where present)
- Local Nature Conservation Designation SDNI (where present)
- Irreplaceable Habitats SDNI
- Conservation Area SDL8
- Air Quality Management Area SDW5
- Scheduled Monument SDL6
- Battlefield SDL6
- SDNPA Boundary

0 250 500 1,000 1,500 2,000 2,500 Metres



Map Notes:
NDP allocations shown to the north of the Lewes parish boundary have been determined by Ringmer and Hamsay NDPs.

© Crown Copyright 2024. Contains Ordnance Survey data © Crown copyright and database right 2024. Released under OGL.
Scale at A0 1:5,000
© Crown copyright and database rights 2026 Ordnance Survey 100050083