

Partnership Working With Farmers and Land Managers

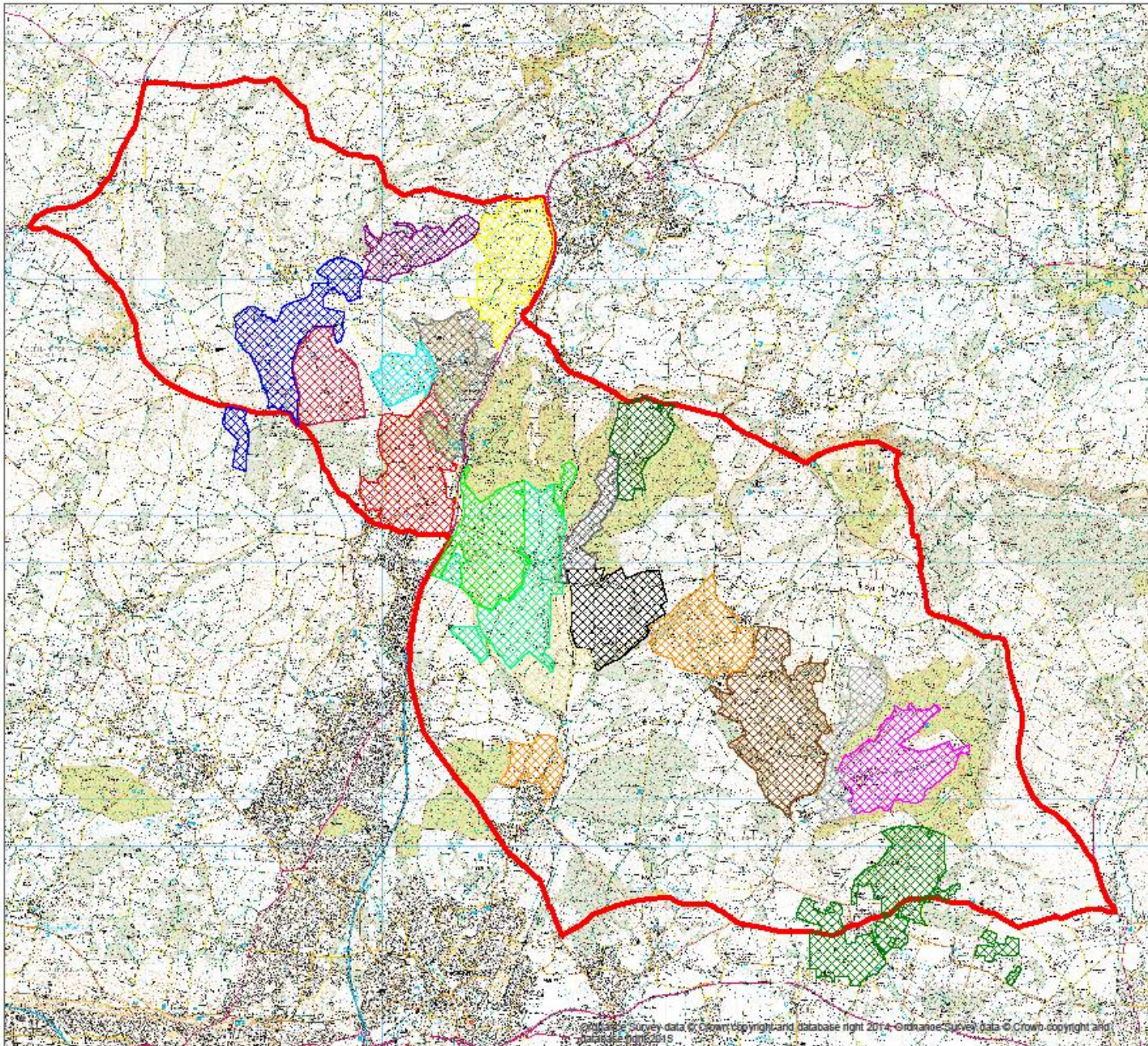
Surveys of Grassland and Arable Margins



The Issue?

- Farm incomes under huge pressure
- Now much better payments for chalk grassland
- Undergrazing a major issue and threat
- For many fields there is inaccurate data or they have never been surveyed – e.g. arable reversion
- Field corners, banks and margins around arable fields may have been uncropped for over 30 years
- Surveys can help raise awareness, justify higher paying options, enthuse the farmer and benefit a landscape scale approach

South Downs Farmers Group



| | | | |
|--|--|--|--|
| | S.J. Atkinson & Partners SBI 106333622 | | Sunwood Farm Partnership SBI 106171821 |
| | J Atkinson (East Mean Ltd) SBI 106220465 | | M H Millington & Sons SBI 106338854 |
| | W Atkinson Farms SBI | | Heberdens Farm SBI 106418555 |
| | T N Luft SBI 106396822 | | Old Idsworth Farm SBI 106345410 |
| | RM Winscom Ltd SBI 106373870 | | West Marden Farms SBI 106332632 |
| | HCC Queen Elizabeth Country Park | | Watergate Estate SBI 106237818 |
| | John Rook Manor Farm Ltd SBI 106239342 | | Pitlands Farm SBI |
| | Old Farm Partnership SBI 106261103 | | Church Farm SBI 106339025 |
| | Netherley Farm Partnership SBI 106397446 | | Basil Baird Farms |
| | | | Project Boundary |

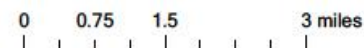
Acknowledgements & Notes:

Created by: RSPB
 © Crown Copyright. All rights reserved. RSPB licence 10021787 © Crown Copyright,
 RSPB Permit Number: 62271.

Farms signed up to the South Downs Farmers Group Facilitation
 Fund application March 2016

Map scale = 1:78,351

Date printed: 16/03/2016



The Project

- Funded through FiPL, administered through the SDNPA
- Full support and commitment from SDNPA team
- Two phases in 2024 and 2025, new bid for three years about to be submitted
- In 2025 430 hectares across 77 fields on 12 farms
- 129 ha was found to be species rich but not recognised
- 121 ha had potential for restoration to species rich
- Difference in potential income could be over £700 / ha compared to £151 / ha.
- Arable flowers too
- Can deliver benefits for biodiversity, carbon, historic environment and our enjoyment of the National Park



Arable farm within SDNP
62 ha or 155 acres of grassland with
value or potential
Grazing may not be viable
Exploring CSS Higher Tier

Some examples

