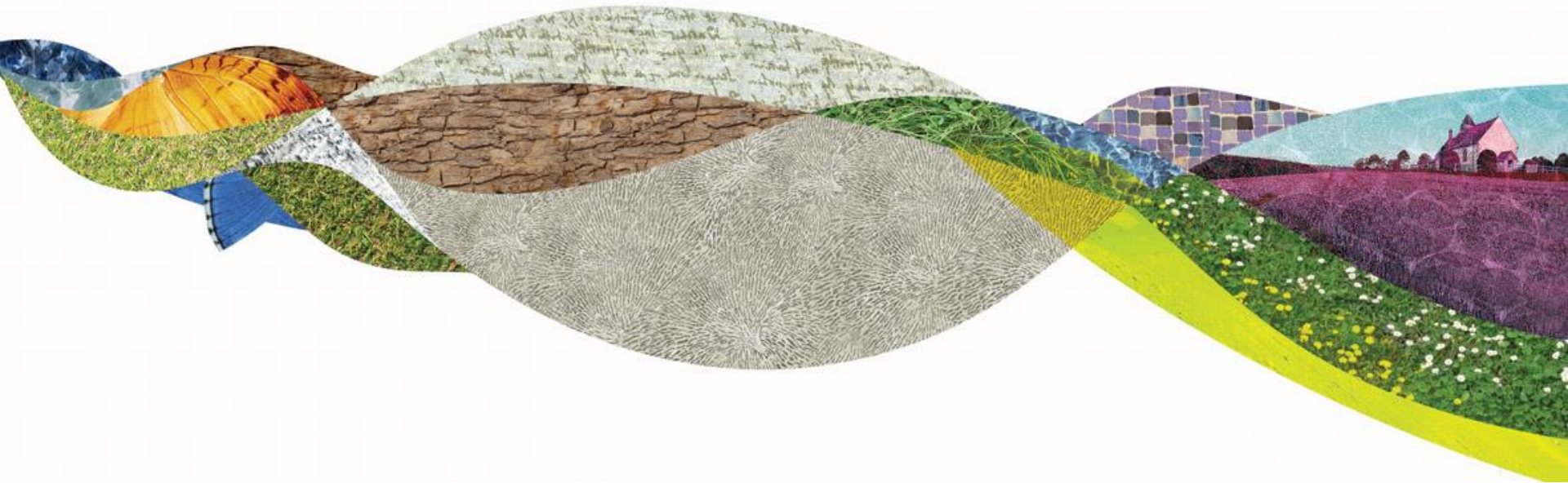



# Minerals and Waste Update

Claire Potts, Minerals and Waste Manager



# Outline

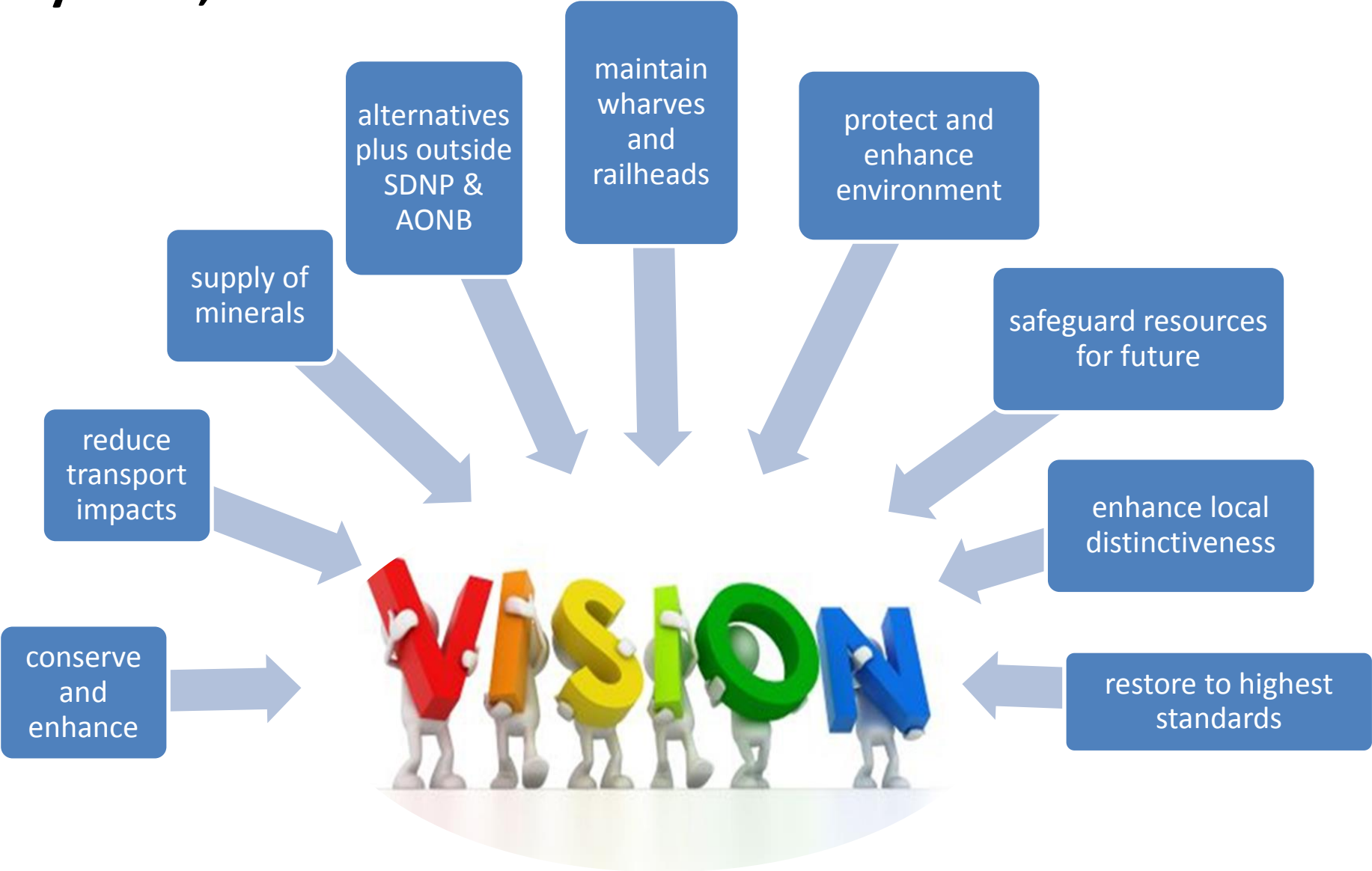
- What's happening
  - Find out more 
  - Get involved



# Minerals – a walk in the Park



# By 2033, West Sussex:



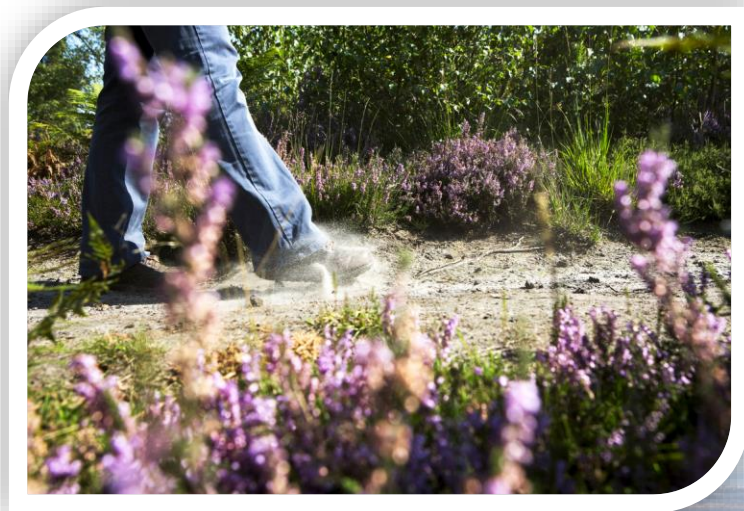
# Aggregates: Sharp sand and gravel



**MLP: Policy M1  
Mineral Site Selection Report**



# Aggregates: Soft Sand



**MLP: Policy M2  
Mineral Site Selection Report  
Soft Sand Study**





# Industrial Minerals: Silica

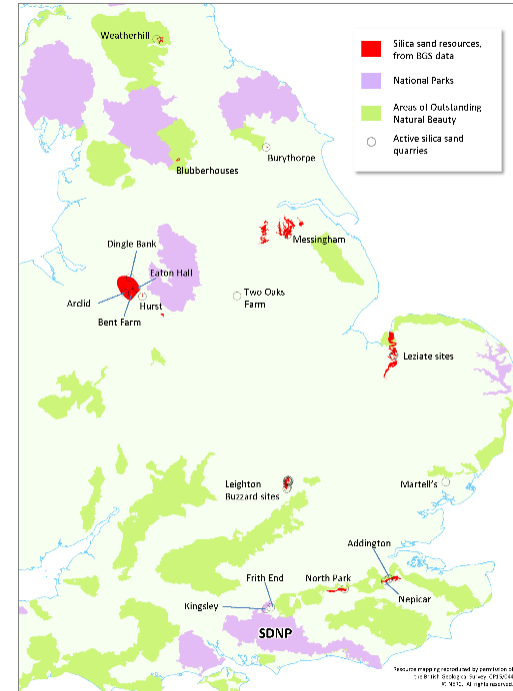
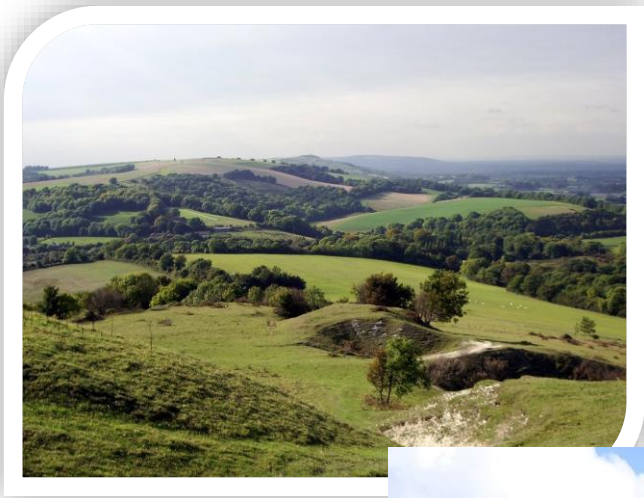


Figure 6.1: Resources and Sites of Silica Sand Production in England, outside the SDNP, April 2015, with National Landscape Designations.

**MLP: Policy M3  
Mineral Site Selection Report  
Soft and Silica Sand Study**



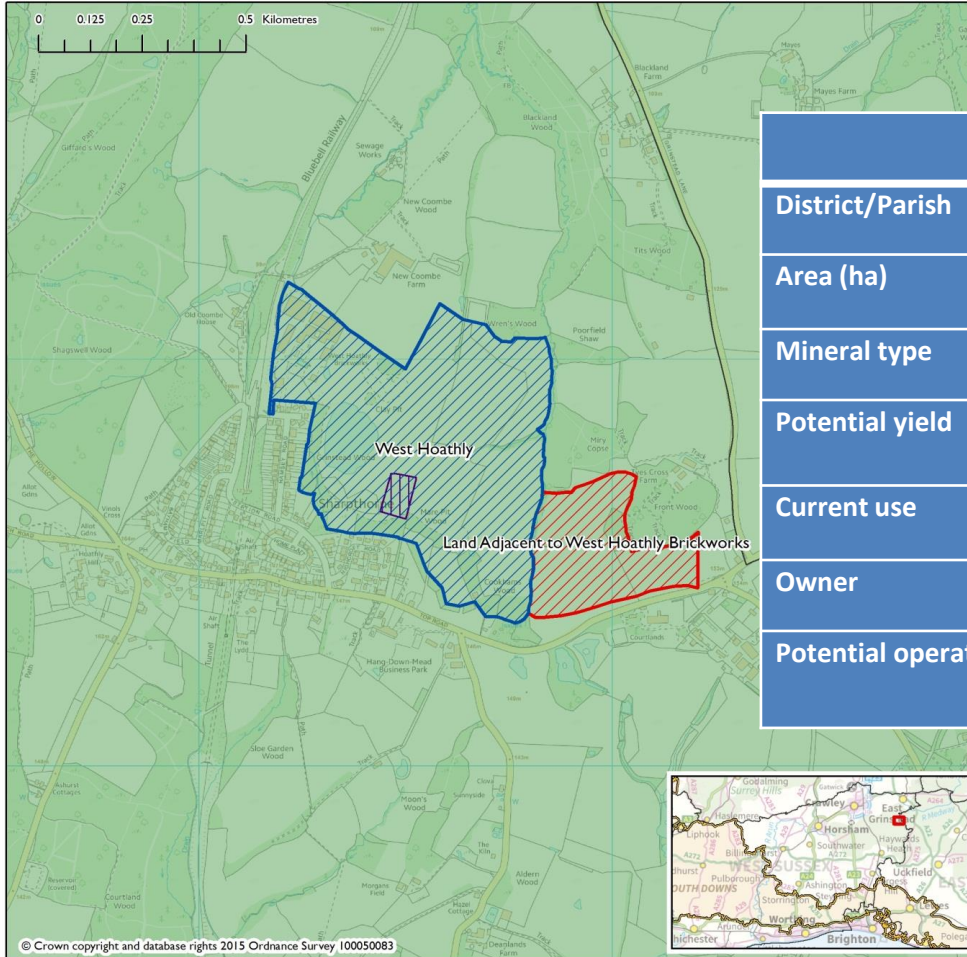
# Chalk and Stone



**MLP: Policy M4 and M6  
Strategic Stone Study**



# Clay - draft Allocation



Site description	
District/Parish	Mid Sussex/West Hoathly
Area (ha)	8
Mineral type	Wadhurst Clay
Potential yield	Unknown
Current use	Agriculture
Owner	Mr Grubb
Potential operator	Ibstock Brick Ltd/Brickbat Ltd.

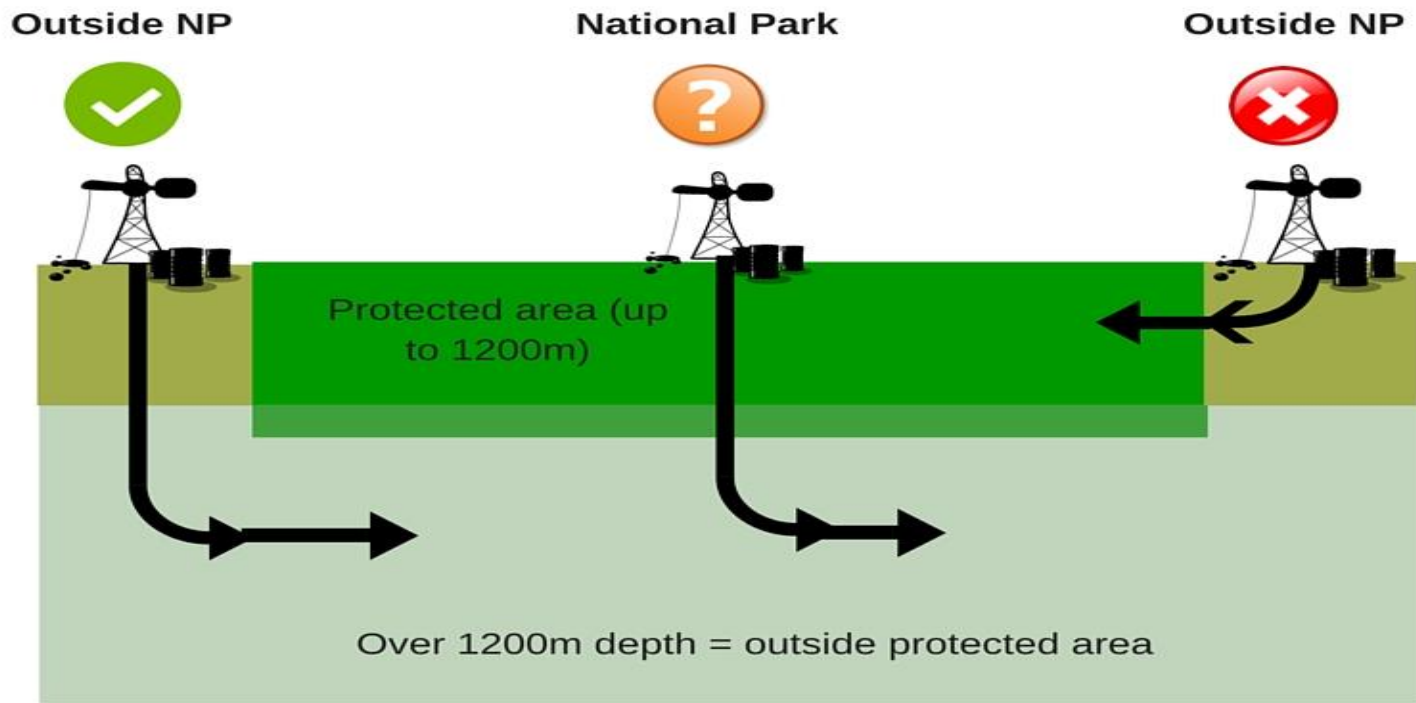
**MLP: Policy M5 and M11  
Mineral Site Selection  
Report**




# Energy Minerals: Oil and Gas



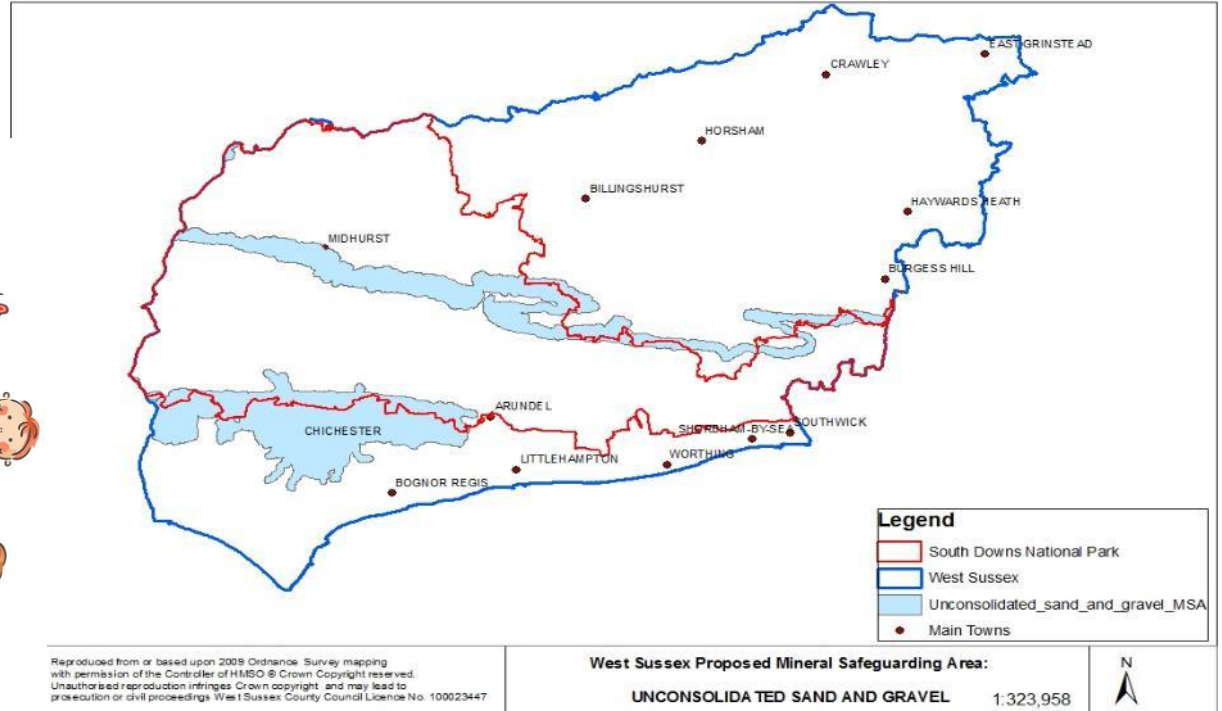
# Oil and Gas: Policy M7b



 = hydraulic fracturing

**MLP: Policy M7a and M7b** 

# Safeguarding



**MLP: Policy M9 and M10  
Minerals and Waste  
Guidance for Parishes**



# Next Steps



NOW – 17  
June

Draft Plan  
consultation

Winter  
2016/early 2017

‘Soundness’  
consultation

Spring 2017

Submission

Summer 2017

Examination

Spring 2018

Adoption





[www.westsussex.gov.uk/mwdf](http://www.westsussex.gov.uk/mwdf)



# Monitoring and enforcement



**Monitoring and  
Enforcement Guide**



# Key Messages

- Minerals Local Plan consultation
  - Find out more and respond online:  
[www.westsussex.gov.uk/mwdf](http://www.westsussex.gov.uk/mwdf)
- Consider minerals and waste safeguarding in your Neighbourhood Plan
- Be on the lookout for waste in the wrong place



