

# South Downs Local Plan: Preferred Options

## West Sussex Parish Workshop

Lucy Howard, Planning Policy Manager



# West Sussex Parish Workshop

- Introduce the South Downs Local Plan: Preferred Options
- Help you find your way around the document
- How to comment on the Local Plan
- Introduce the exhibition
- Questions & answers



# Purpose of the Local Plan



- Land use
- Development
- Planning applications
- Landscape conservation & enhancement



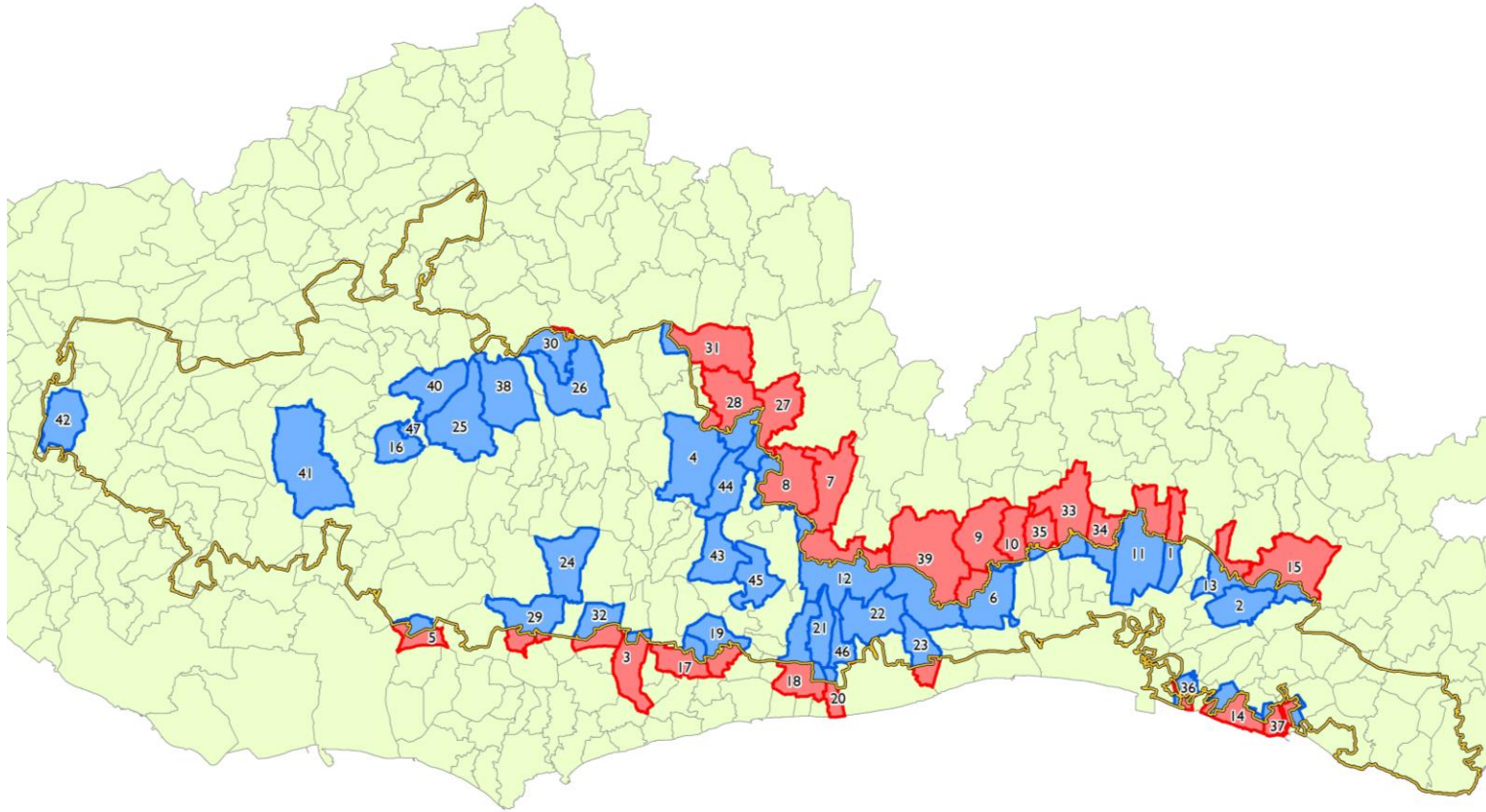
# Purpose of the Local Plan



- Change the world
- Re-open railway lines & start bus services
- Deliver all of the PMP
- Minerals & Waste
- Transport



# Neighbourhood Plans



# A landscape led plan



# Contents: Chapters

1. Introduction
2. Spatial Portrait
3. Vision & Objectives
4. Core Policies
5. A Thriving Living Landscape: Strategic Policies
6. People Connected with Places: Strategic Policies
7. Towards a Sustainable Future: Strategic Policies
8. Strategic Sites
9. Site Allocations
10. Development Management Policies
11. Implementation & Monitoring



# Contents: Maps & Appendices

- Inset Maps
  1. Current Development Plan Policies
  2. Special Qualities
  3. Neighbourhood Development Plans
  4. Evidence Based Studies
  5. Village Design Statements, Parish Plans & Local Landscape Assessments
  6. Conservation Areas, Registered Parks & Gardens & Battlefields



# A Thriving Living Landscape



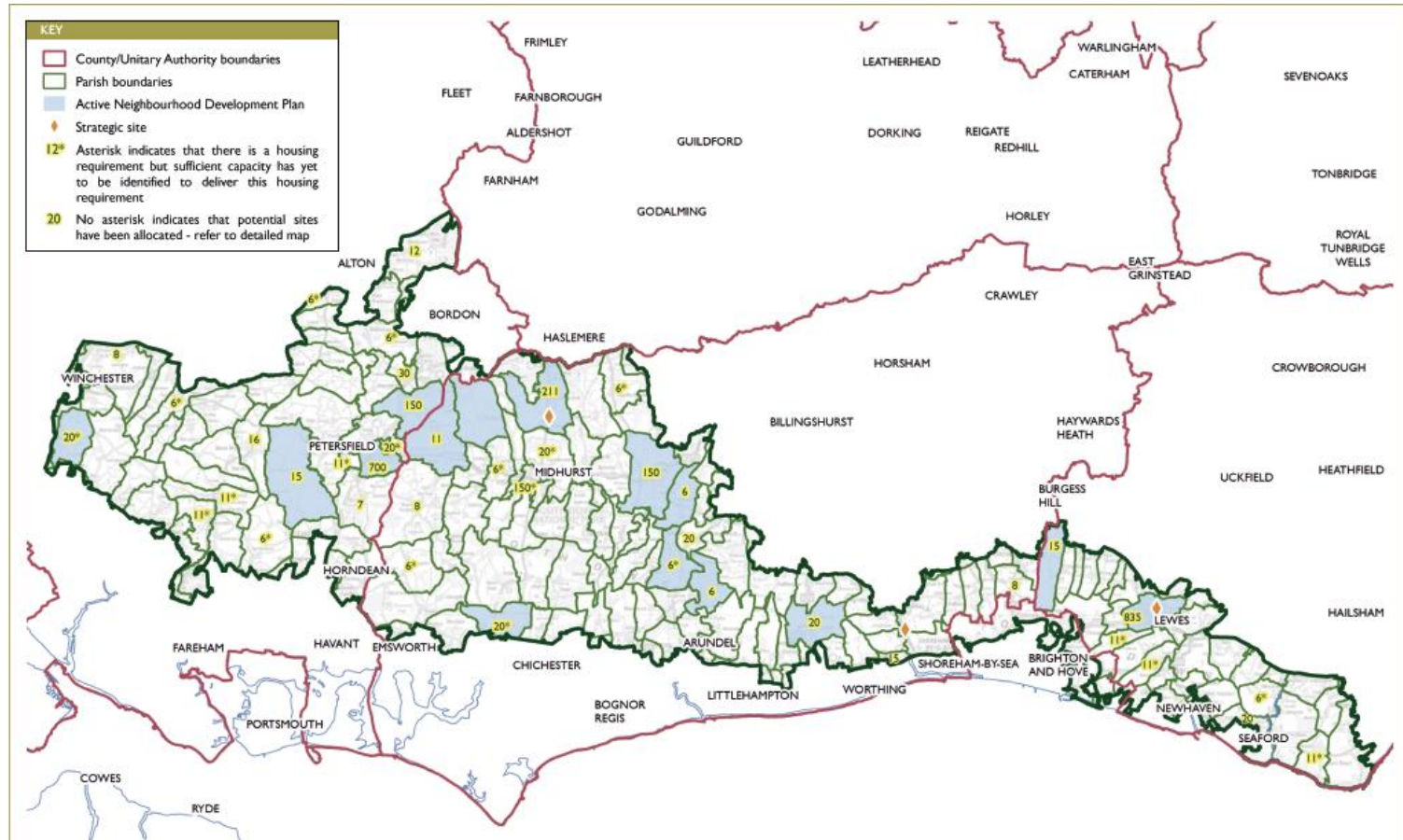
# People Connected to Places



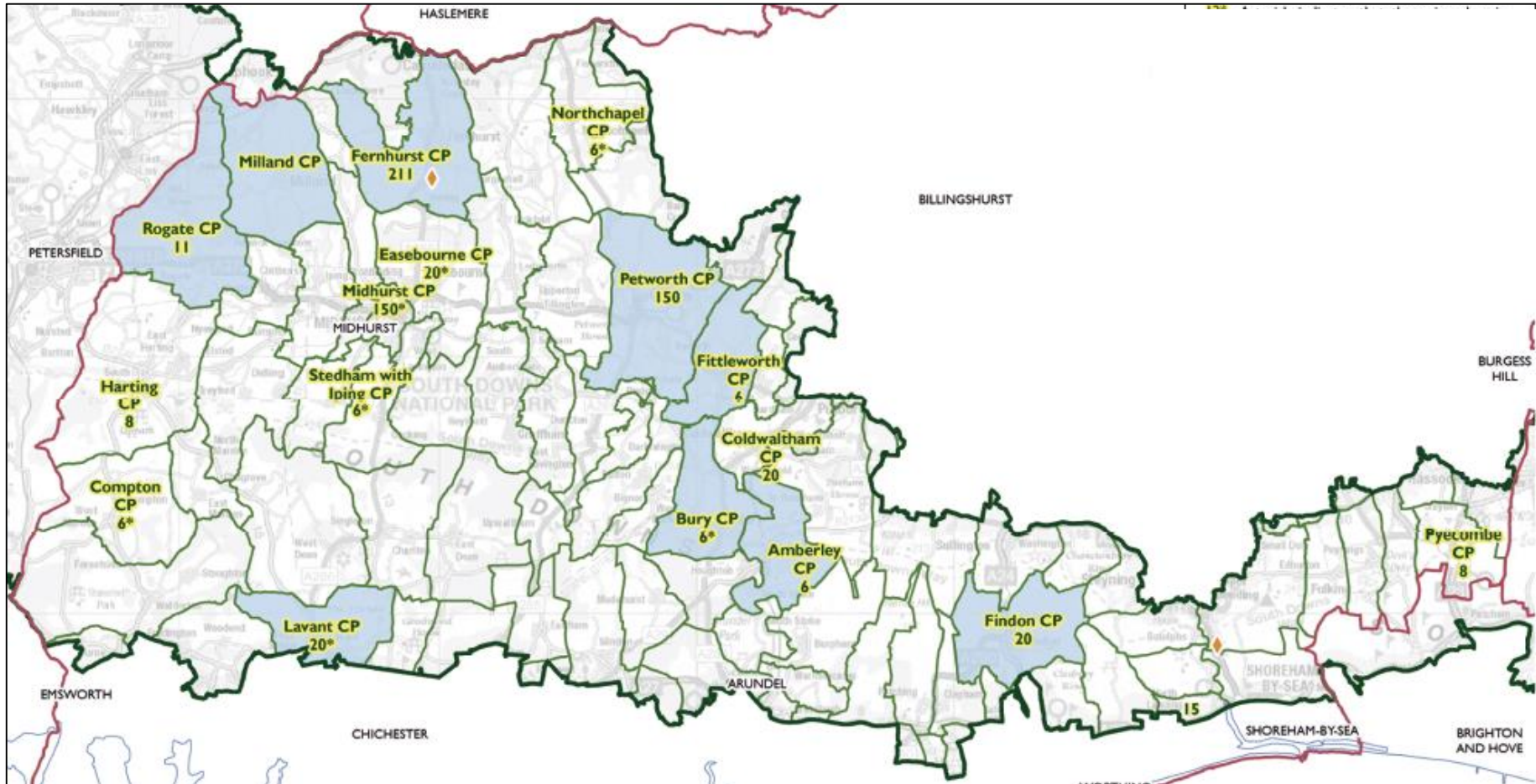
# Towards a Sustainable Future



# Sites & Settlements: Park-wide



# Sites & Settlements: West Sussex



# Evidence base

- Sustainability Appraisal (SA)
- Habitat Regulation Assessment (HRA)
- SHLAA, SHMA, Viewshed, Tranquility



# Call for Sites

- Housing sites
- Gypsy and Traveller sites
- Local Green Spaces



# How to comment on the Local Plan

- Consultation website:  
[www.southdowns.gov.uk/localplanconsultation](http://www.southdowns.gov.uk/localplanconsultation)
- Electronic comment form and email to:  
[planningpolicy@southdowns.gov.uk](mailto:planningpolicy@southdowns.gov.uk)
- Paper copy comment form to:  
South Downs National Park Authority,



# When to comment on the Local Plan

2<sup>nd</sup> September to 28<sup>th</sup> October 2015

Consultation closes at 23.59



# Frequently Asked Questions (FAQ)

Who?

How?

What?

When?

Where?



# South Downs Local Plan

Local Plan stage	Regulation	Date
Issues and Options	18	Spring 2014
Preferred Options	18	Autumn 2015
Publication version	19	Autumn 2016
Submission to Secretary of State	22	Autumn 2016
Examination	24	Early 2017
Adoption	26	Mid 2017

